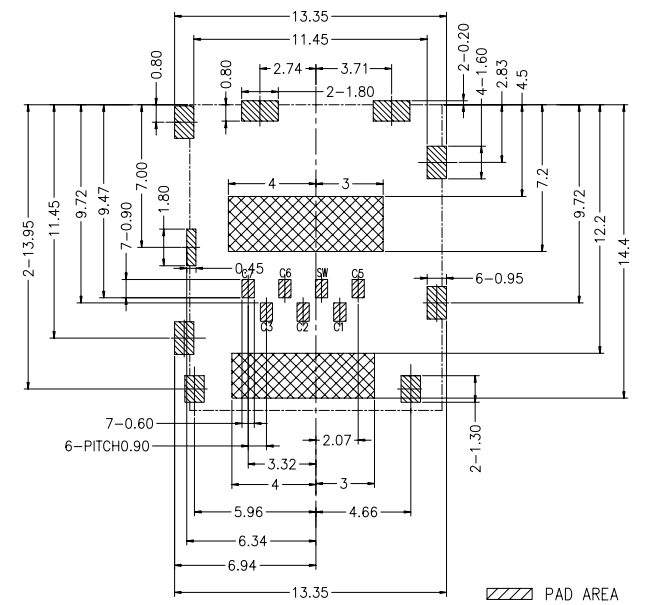
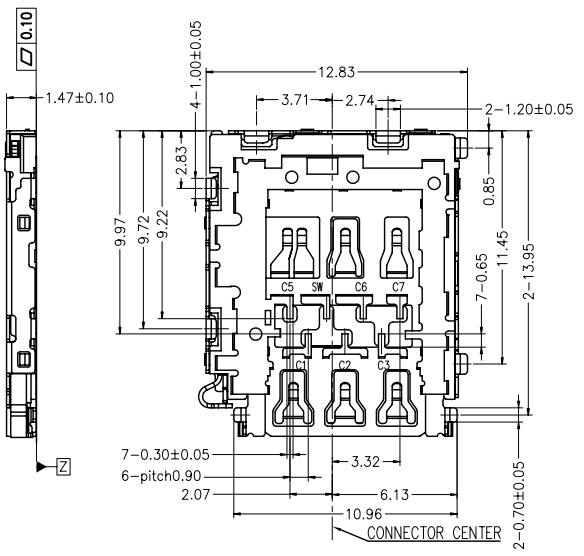
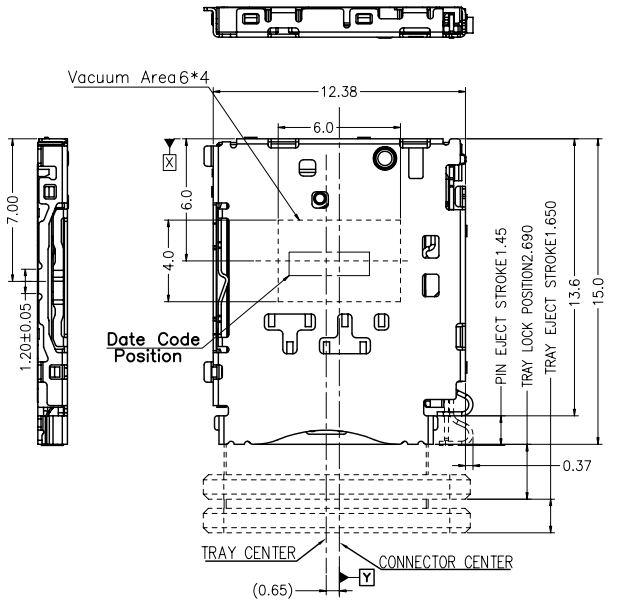
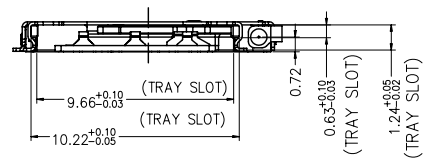


REV.	DATE	ECN NO.	MODIFICATION	APPROVER
A	2016/01/15	/	NEW	Vicky



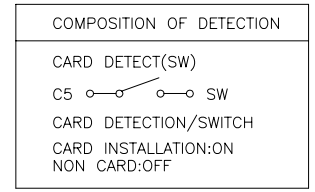
PAD AREA
 NO COPPER AREA
 (NO Trace&Via&GND)

RECOMMEND P.C.B LAYOUT
(General tolerance ±0.05)



SIM Card Pin Assignments

NANO SIM CARD	
C1	Vcc
C2	RST
C3	CLK
C5	GND
SW	CD/SW
C6	Vpp
C7	DATA



- NOTE:
- Material:
 - 1-1 Housing:High Temperature Thermoplastic,Color Black UL 94V-0
 - 1-2 Contact: Phosphor Bronze
 - 1-3 Cover: SUS
 - Plating:
 - 2-1 Contact terminal:
 - Contact area: Gold Plated.
 - Solder area: Gold Plated.
 - Underplating: Ni overall.
 - 2-2 Cover:
 - Underplating: Ni overall.
 - Solder area: Gold Plated.
 - Specification:
 - 3-1.Current Rating :0.5mA max.
 - 3-2.Contact Resistance: 50 mOhms max
 - 3-3.Insulation Resistance:1000 MOhms min./500VDC
 - 3-4.Dielectric Withstanding Voltage:500 V AC/1minute
 - 3-5.Operating Temperature:-25°C to+85°C
 - 3-6.Mating Cycles:5000 Insertions

GENERAL TOLERANCE		UNITS	mm	NAME:	NANO SIM
SELECT	✓			PART NO:	RSS72C-08200
TOL.	1	2	3		
ON.					
X.XXX	±0.10	±0.05	±0.15	FINISH	
X.XX	±0.20	±0.13	±0.25		
X.X	±0.35	±0.25	±0.50	Q'TY	
X.		±0.38	±1.00		
ANGLE	±2'				
				SCALE	SHEET
				1:1	1/1
				REV	A