

## Product Details specification

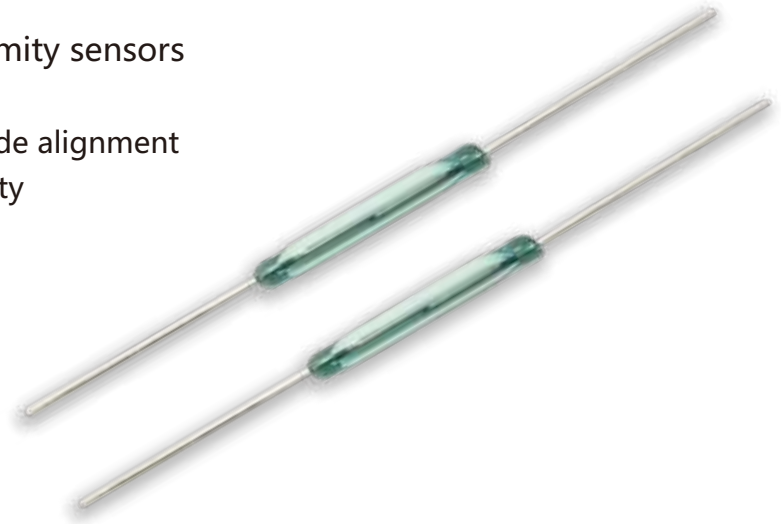
Products Name	File No.	Version	Date	Page
BL-0214 Reed switch	BL-3D-289	2019-A1	2019.4.20	1/3

### ■ Function

- 1、 Ideal for ATE switching and proximity sensors
- 2、 Contact layers: Ruthenium on gold
- 3、 Superior glass-to-metal seal and blade alignment
- 4、 Excellent life expectancy and reliability
- 5、 RoHS Compliant

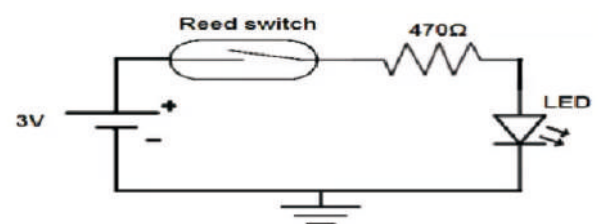
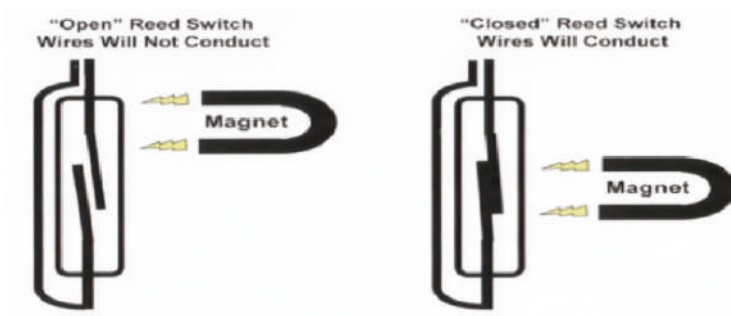
### ■ Applications

- 1、 Alarm device
- 2、 Toys
- 3、 Electronic scale
- 4、 Communicatio
- 5、 Medical



### ■ Features

- 1、 Micro changeover dry-reed switch hermetically sealed in a gas-filled envelope. Single-pole, double-throw (SPDT) type, having a normally open and a normally closed contact.
- 2、 The switch may be actuated by an electromagnet, a permanent magnet or a combination of both. The device is intended for use in sensors, relays, pulse counters or similar devices.



## Product Details specification

Products Name	File No.	Version	Date	Page
BL-0214 Reed switch	BL-3D-289	2019-A1	2019.4.20	2/3

### ■ Electrical characteristics

ELECTRICAL CHARACTERISTICS	Contact form	1A(SPST-NO)	
	Contact material	Ru	①
	Contact Rating	10W	
	Max Switching Voltage	180VDC/130VAC	
	Max Switching current	0.5A	
	Contact resistance	150MΩ	
	pull in vaiue (AT)	5-30	②
	dropout vaiue (AT)	5	
WORKING CHARACTERISTICS	actuation time	0.6mSec(Max.)	③
	Release time	0.2mSec(Max.)	
	high pressure resistant	200VDC	④
	Contact Capacitance	0.2PF	
	insulation resistance	10 <sup>9</sup> Ω	⑤
	frequency	5.2KHZ	
	operating temperature range	负40℃-+125℃	
	Electrical life	10*10 <sup>7</sup> 次	
	The test coil	5000T 420Ω	
	Lead foot	Gold- plated (镀金)	
	Safety	UL	

### Parameter Description :

- ①The contact is sealed in a professional glass tube filled with inert gas, and the surface of the contact is plated with gold and then ruthenium (Ruthenium)
- ② The starting value pull in vaiue (AT) is the value measured using the standard test coil, the tolerance of the starting value is  $\pm 2AT$
- ③Actuation time activation time refers to the time when the standard test coil is applied with voltage, and the contact is closed.
- ④High pressure resistant depends on the parameters of different starting value ranges (the gap between the actual fingers).
- ⑤Insulation resistance insulation resistance is tested with 100VDC measuring instrument.

## Product Details specification

Products Name	File No.	Version	Date	Page
BL-0214 Reed switch	BL-3D-289	2019-A1	2019.4.20	3/3

### ■ Welding characteristics

Manual welding :  $320^{\circ}\text{C}\pm 10^{\circ}\text{C}$ , 2-3s.

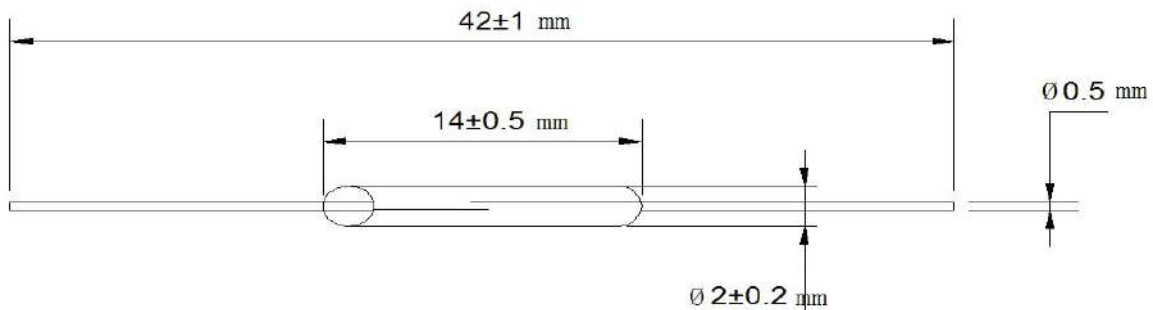
### ■ Packaging

1000PCS/bag ( PVC plastic bags, stored according to general electronic material storage requirements )

### ■ SIZE

Unit: mm,

Tolerance  $\pm 0.25$



### ■ Note

If the product used for high security products and durability of extremely high equipment (such as life safety equipment, aviation facilities, disaster prevention device), please confirm whether a share, can seek advice our company for details.  
In case of fire, Please do not overload applicable.

The welding temperature or time more than standard, can cause switch collapse.

Do not use water solubility flux. May cause damage to the switch.

Do not use solvent wash switch.

This switch conduction rate of 98% (conductivity rate per 100 times value switch actions, can good conduction ratio).

Bailing company is only responsible for the defective problems of the product itself, return and exchange the defective products, and does not bear other joint and several expenses.