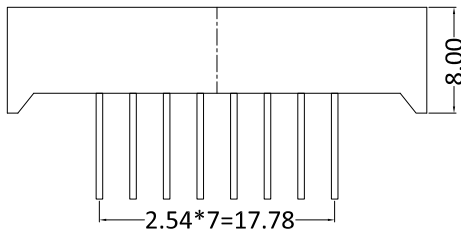
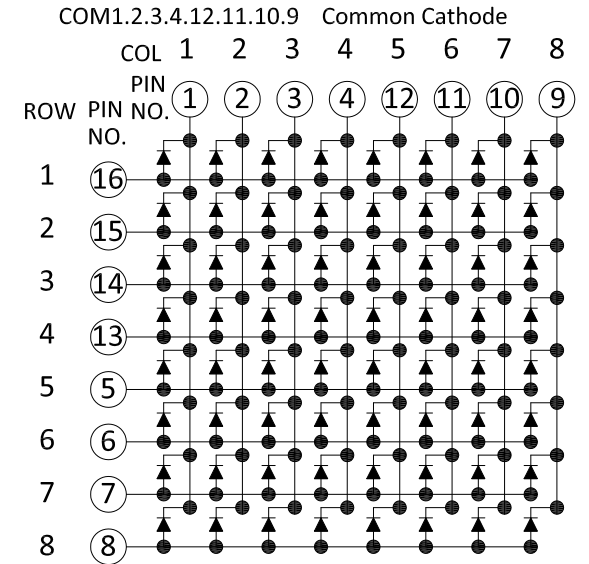
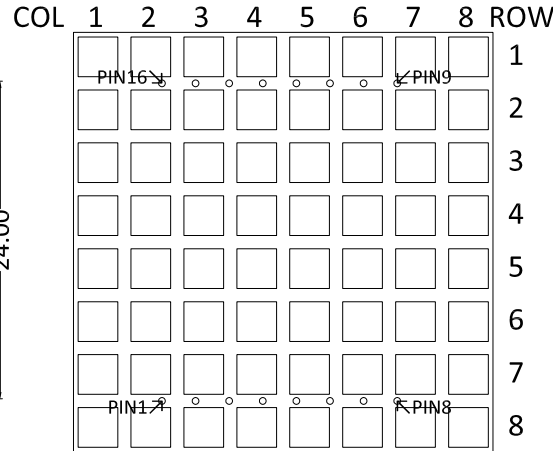
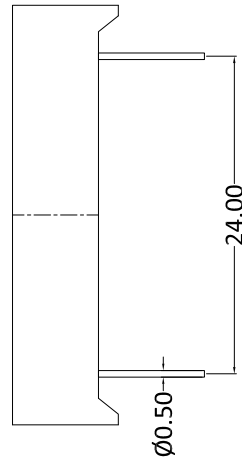
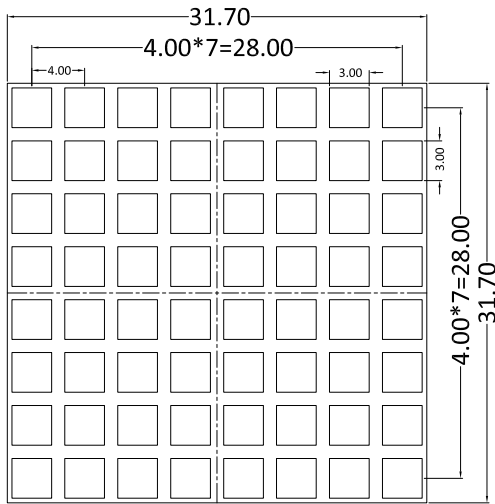
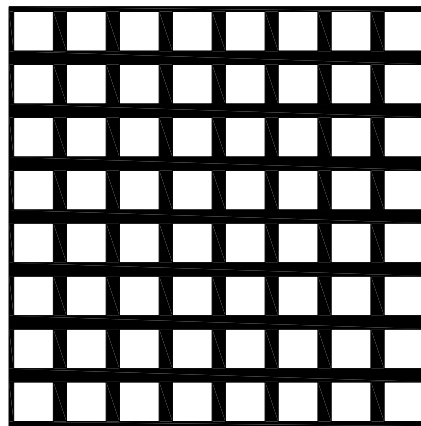


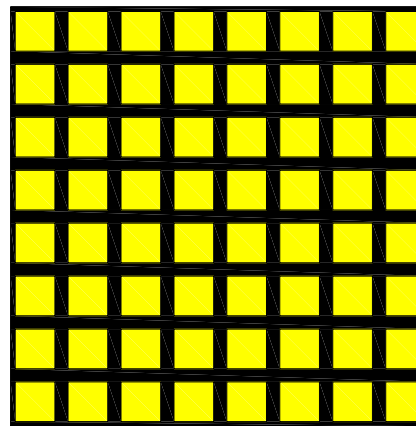
# Front



Lighten:



No light:



## Schematic diagram

REV.	DATE	MODIFICATION
1.0	2021.05.18	First Issue

- NOTES:  
 1. Display Color: White  
 2. Operating TEMP: -30°C ~ +105°C  
 3. Storage TEMP: 5°C ~ +30°C (Suggest)  
 4. Storage Humidity: 40%RH ~ +60%RH  
 5. Connector: Vertical PIN

PART NO. 3.088DAW	
REV. 1.0	SHEET OF 1/1
TOLERANCE UNLESS SPECIFIED ±0.2	
PROJECTION 3rd ANGLE	UNIT mm
SCALE 1:1	