

Features

- Small size with 16A high switching capacity.
- Low coil power consumption: 200mw available.

Safety Approval

UL, TUV, CQC

Contact Capacity

Model	YTA
Nominal Switching Capacity	10A 250VAC 16A 125VAC
Max. switching current	16A
Max. switching voltage	250VAC
Max. switching power	4,000VA

Characteristic Data

Contact material	Silver alloy	
Initial contact resistance(at 6VDC 1A)	50mΩ Max.	
Operate time(at nominal volt)	15msec. Max.	
Release time(at nominal volt)	8msec. Max.	
Initial insulation resistance	1,000MΩ Min.(DC500V)	
Initial dielectric strength	Between open contacts: AC1,000V,50/60HZ 1Min.	
	Between coil and contacts: AC4,000V,50/60HZ 1Min.	
Vibration resistance	Functional	10-55 HZ at double amplitude of 1.5mm
	Destructive	10-55 HZ at double amplitude of 1.5mm
Shock resistance	Functional	10G Min.
	Destructive	100G Min.
Endurance(operations)	Mechanical(at 10,800ps.h)	10,000,000 times
	Electrical(at 10,800ps.h)	100,000 times
Ambient temperature	-40℃ ~ +105℃(no condensation)	
Unit weight	Approx. 8.6g	

Coil Data(at 20℃)

Nominal voltage (VDC)	Nominal operating current ± 10% (mA)	Coil resistance ± 10% (Ω)	Allowable voltage (Max.)	Pick-up voltage (Max.)	Drop-out voltage (Min.)	Nominal operating power
3	66.67	45	130% of nominal voltage	75% of nominal voltage	5% of nominal voltage	0.20W
5	40.00	125				
6	33.33	180				
9	22.22	405				
12	16.67	720				
18	11.11	1,620				
24	8.57	2,800				
48	7.09	6,770				0.34W

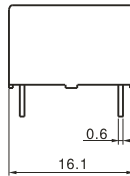
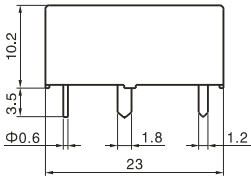
Safety Approval Ratings

Approval	CQC	TUV	UL/CUL
Approval ratings	16A 250VAC	16A 250VAC 16A 30VDC	16A 125VAC, Resistive TV-5

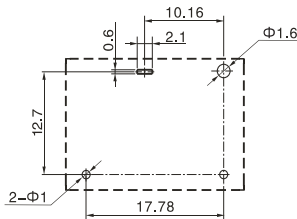
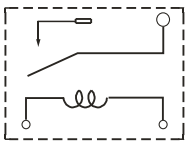
Ordering Information

Nomenclature	
YTA-SS-1 12 D M-XX	
	Special parameter: Nil-Standard type Letter or number: Special requirement
	Contact Form: M-Form A Nil-Form C
	Coil Power: D-0.45W L-0.36W
	Coil Voltage: 03,05,06,09,12,24, 48
	Number of Pole: 1-1 Pole
	Protective Construction: SS-Flux proofed SH-Sealed type washable
	Type Designation: YTA

Outline Dimensions, Wiring Diagram, P.C Board Layout(Unit:mm)



Wiring Diagram(bottom view)



PCB Layout(bottom view)

Unless otherwise specified:
 <1mm, tolerance, ±0.2mm;
 1-5mm, tolerance, ±0.3mm;
 >5mm, tolerance, ±0.4mm;
 Note: 1. Extended terminal dimension is dimension before soldering.
 2. Tolerance of PCB layout: ±0.1mm

Typical Applications

- Office equipment
- Home appliances
- Audio system
- Automation and instrument
- Automotive control device, etc.